

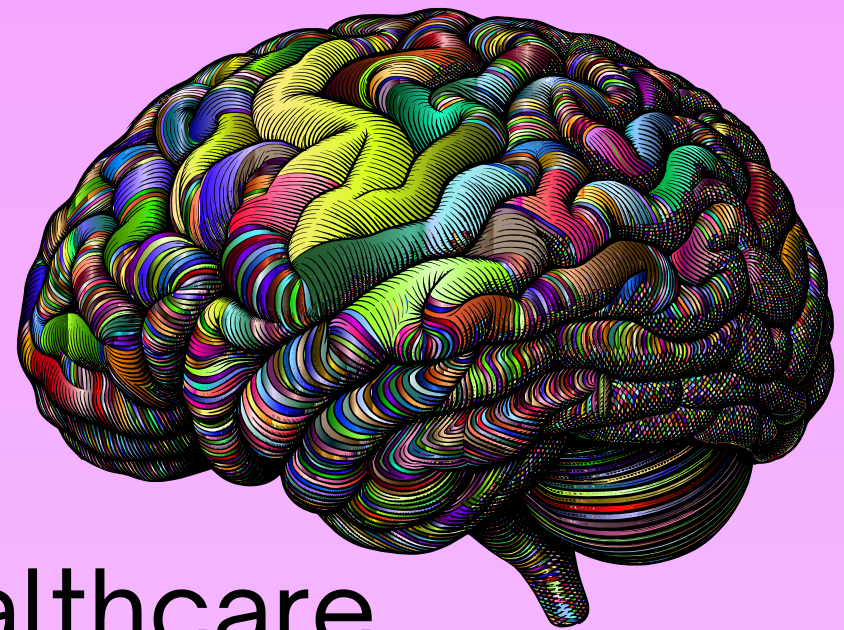
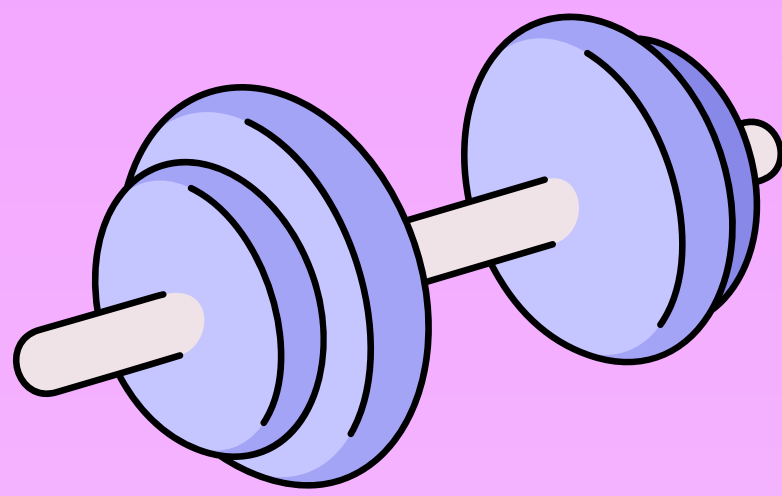
# DO YOU HAVE ADHD?

Research Participants Needed!

## Understanding the Impact of Adult ADHD on Adherence to Rehabilitation Programmes: A Qualitative Study

If you...

- Are an adult (18 years +).
- Have a formal ADHD diagnosis from a healthcare professional.
- Have had an exercise plan prescribed to you by a qualified physiotherapist within the last 12 months.
- Do not have other neurological conditions e.g. autism, OCD or Bipolar disorder.



then you are qualified to participate in our study!

### What's involved?

- One-one interview, Online via Teams.
- The interview will last up to 60 minutes.



For more information, please access the Participant Information Sheet by scanning the QR Code!

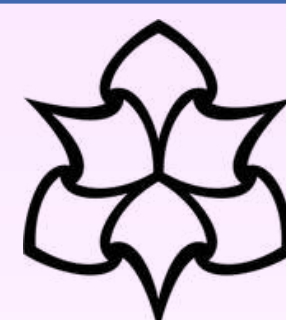


If you would like to participate in the study, please email [hugh.spencer@stu.mmu.ac.uk](mailto:hugh.spencer@stu.mmu.ac.uk)

Contact [hugh.spencer@stu.mmu.ac.uk](mailto:hugh.spencer@stu.mmu.ac.uk) with any queries.

Ethics Application Number: 83647

Version 1. 01/02/2026



**Manchester  
Metropolitan  
University**